

A Changing New Zealand



2002

In 1901, 54 percent of the population lived in rural areas. By 2001, this had declined to 14 percent.

A Changing New Zealand

Further information is available on the Statistics New Zealand website: www.stats.govt.nz or by contacting Statistics New Zealand's Information Centre toll free on 0508 525 525.

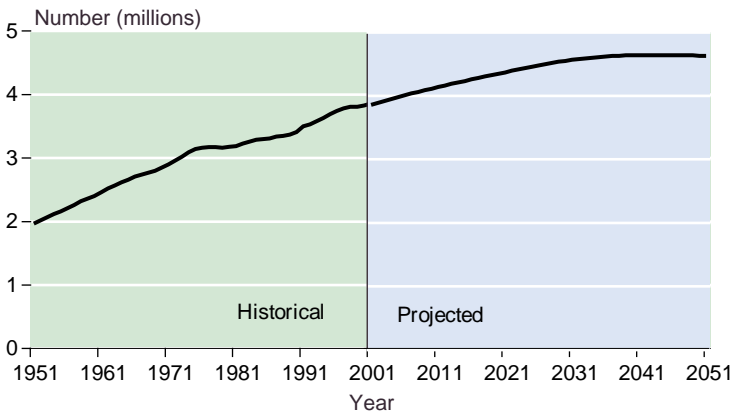
Contents

1	The population is growing, but slowly	2
2	Large differences in regional growth	3
3	The median age is increasing	4
4	The proportion of older people is increasing	5
5	New Zealand is becoming more ethnically diverse ...	6
6	More New Zealand residents are born overseas	7
7	More people are multilingual	8
8	Families are changing	9
9	One-person households increase	10
10	Differences in access to telecommunications	11
11	Not everyone has access to the Internet	12
12	Overseas travel is increasing	13
13	Employment patterns change	14
14	Consumer prices more than doubled since 1984	15
15	International trade is changing	16

1. The population is growing, but slowly

- Based on the current trends of an annual net migration gain of 5,000 and below-replacement fertility, New Zealand's population will be unlikely to reach the five million mark in the next 30 years.
- In 1984 New Zealand's estimated population was 3,260,300.
- In 2001 it had increased to 3,846,100.
- By 2021 the population is projected to reach 4,375,000 (based on current trends).

New Zealand Population Growth Rate⁽¹⁾
1951–2001

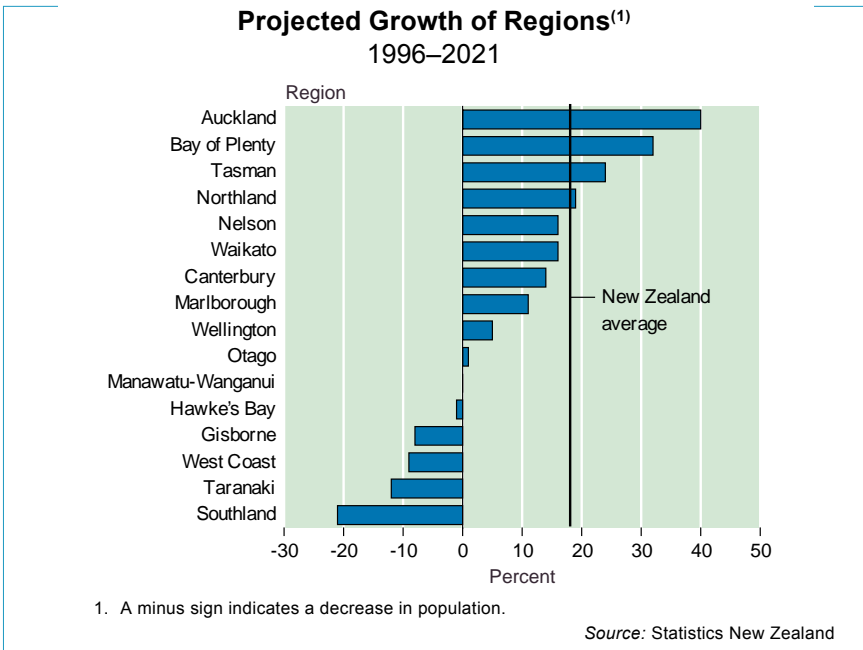


1. Projections based on medium fertility and mortality, and a long-term annual net migration gain of 5000.

Source: Statistics New Zealand

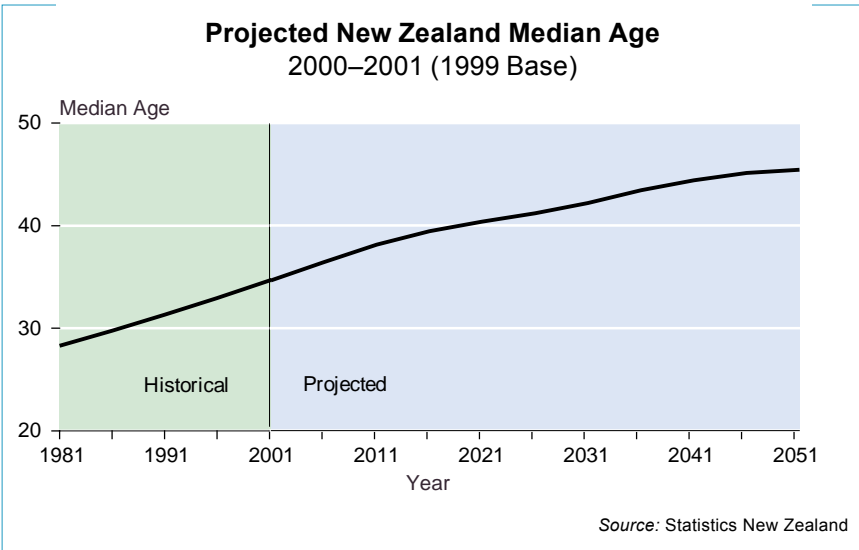
2. Large differences in regional growth

- Today more New Zealanders live in urban areas. In 1901, 54 percent of the population lived in rural areas. By 2001 this had declined to 14 percent (532,740 people).
- New Zealanders are a geographically mobile population. On average, 1 in 2 New Zealanders change their address at least once every five years.
- On current trends, 10 of New Zealand's 16 regions are expected to grow in population size.
- Only four regions are expected to grow at a rate faster than the national average: Auckland, Bay of Plenty, Tasman and Northland.
- The Auckland region dominates growth. Currently 1 in 3 New Zealanders live in Auckland. The majority of immigrants choose to live in the Auckland region. In 2000, 56 percent of new settlers arriving intended to live in the Auckland region.



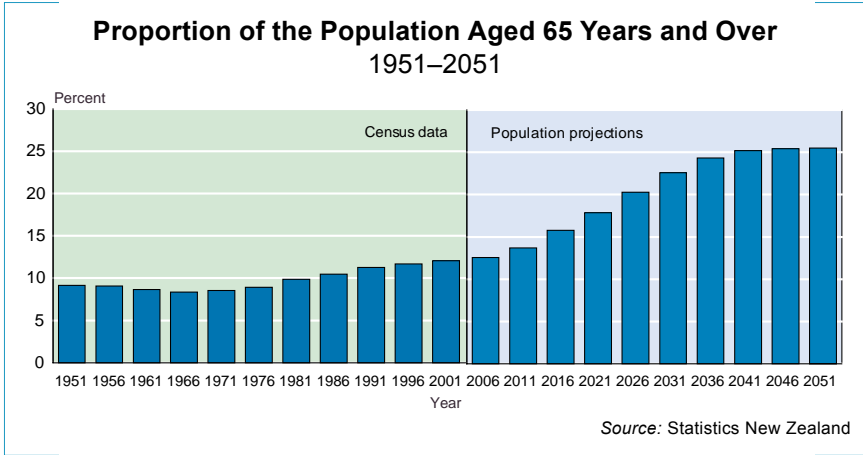
3. The median age is increasing

- In 1901 the median age of the population was 23 years.
- By 1991 the median age was 31 years.
- In 2001 it was 35 years.
- By 2021 it is projected to be 40 years.



4. The proportion of older people is increasing

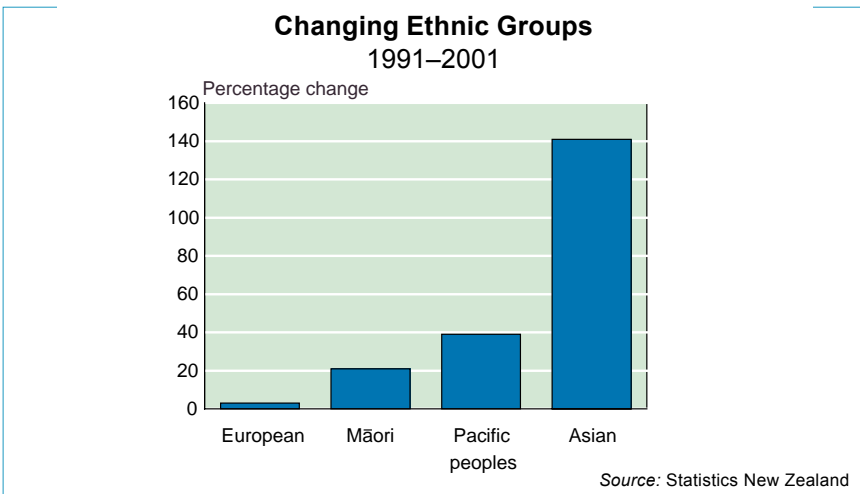
- The proportion of older people (people aged 65 years and over) is increasing. In 1951 they made up 9 percent of the population. By 2001 this had increased to 12 percent and by the year 2051 it is projected that they will comprise 26 percent of the population.



- The number of older people has more than doubled since 1951, increasing from 177,459 to 450,426 in 2001.
- In the next 50 years it is projected that the number of older people will more than double again to reach 1,181,000 by 2051.
- Life expectancy (at birth) has increased and is now 76 years for males and 81 years for females. This is in the mid-range for OECD countries.

5. New Zealand is becoming more ethnically diverse

- The population count of people of European ethnicity has declined from 83 percent of the total in 1991 to 80 percent in 2001.
- The 2001 Census counted more people of Asian ethnicity than of Pacific peoples ethnicity.
- Numbers of people of Asian ethnicity have more than doubled between 1991 and 2001.
- Two-thirds of people of Asian ethnicity live in the Auckland region and 1 in 8 live in the Wellington region.
- Two-thirds of people of Pacific peoples ethnicity live in the Auckland region.



Ethnic Group	2001 Census	Percentage Increase from 1991
Korean	19,026	1,946
Arab	2,856	1,514
Croat	2,502	1,363
Iraqi	2,145	772
South African	14,889	642
Russian	3,084	543

6. More New Zealand residents are born overseas

- Almost 1 in 5 New Zealand residents were born overseas (2001 Census).
- In the Auckland region, 1 in 3 people were born overseas.
- The main country of overseas birthplace for New Zealand residents was England, followed by Australia.

The main countries of overseas birthplace were:

Country of Birth	Count
England	178,203
Australia	56,259
Samoa	47,118
China	38,949
Scotland	28,680

- While the number of New Zealand residents who were born in Europe has shown a small decline since 1996, there have been large increases from Africa, the Middle East and Asia.

The greatest increase in counts of overseas birthplace between 1996 and 2001 were for:

Country of Birth	Absolute Increase from 1996	Percentage Increase from 1996
China	19,431	100
South Africa	14,727	130
India	8,082	63
Fiji	6,951	37
Korea	5,751	47

7. More people are multilingual

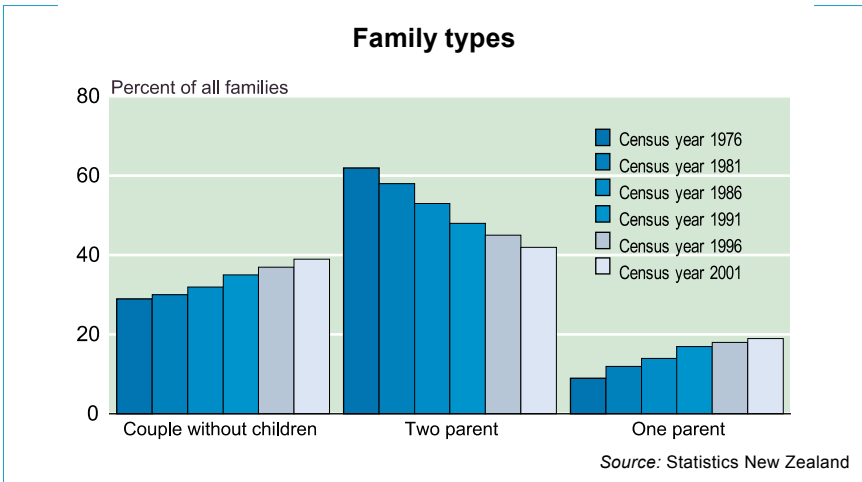
- The number of multilingual people in New Zealand increased by 20 percent from the 1996 Census to 562,113 or nearly 1 in 6.
- Excluding children under five years of age, 1 in 50 people do not speak English.

The languages most widely spoken after English were:

Language	Count
Māori	160,527
Samoan	81,036
French	49,722
Yue (Cantonese)	37,143
German	33,981

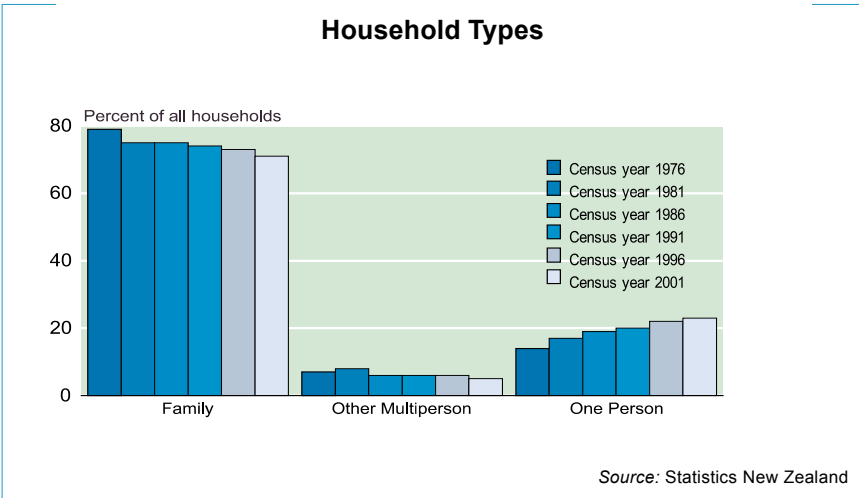
8. Families are changing

- The last 25 years have seen the percentage of two-parent families decrease by almost one-third, from 62 percent of all families in 1976 to 42 percent in 2001.
- There has been a corresponding rise in couples without children from 29 percent of all families to 39 percent over the same period.
- The percentage of one-parent families has more than doubled from 9 percent of all families in 1976 to 19 percent in 2001.



9. One-person households increase

- There has been a significant increase in one-person households since 1976.
- The number of private occupied dwellings increased by 6.5 percent between 1996 and 2001. This was higher than the population growth of 3.3 percent.
- The average household in New Zealand had 2.7 people in 2001, down slightly from 2.8 people 10 years earlier.
- The percentage of family households is decreasing.



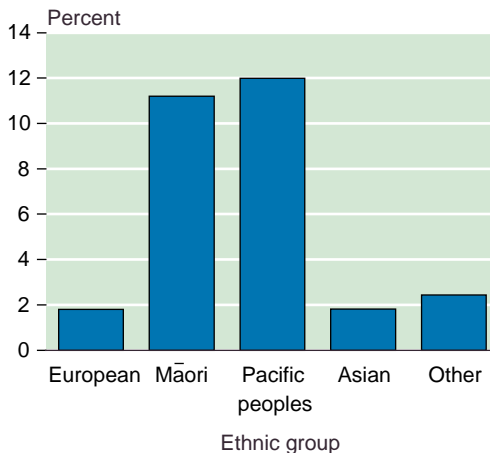
10. Differences in access to telecommunications

- 1 in 25 households do not have access to a telephone, fax or the Internet in the dwelling.
- 1 in 9 people of Māori ethnicity live in households that do not have telephone, fax or Internet access.
- 1 in 8 people of Pacific peoples ethnicity live in households that do not have telephone, fax or Internet access.

Percentage of People Living in Households with No Access to Telecommunications⁽¹⁾

By ethnic group

2001 Census of Population and Dwellings



¹ Includes all of the people who stated each ethnic group, whether as their only ethnic group or as one of several ethnic groups. Where a person reported more than one ethnic group, they have been counted in each applicable group.

Source: Statistics New Zealand

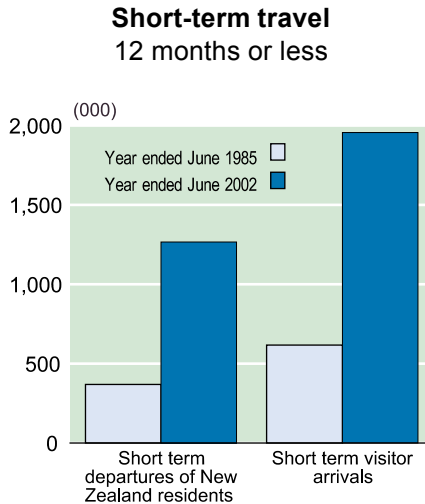
11. Not everyone has access to the Internet

- In 1986, 7 percent of households owned a computer. By 2001 this had risen to 47 percent.
- Almost 4 in 10 households have access to the Internet in their dwelling.
- Households in main centres are more likely to have Internet access.
- Households likely to have a lower rate of internet access are:
 - ◆ Households with an income of \$10,001 to \$15,000 – 1 in 9 have access to the Internet.
 - ◆ Households comprising one parent with children – 3 in 10 have access to the Internet.
 - ◆ One-person households – 1 in 6 have access to the Internet.
 - ◆ Households who rent from a local authority, city council or Housing New Zealand – 1 in 10 have access to the Internet.
 - ◆ People of Māori ethnicity – 1 in 4 live in households with access to the Internet.
 - ◆ People of Pacific peoples ethnicity – 1 in 5 live in households with access to the Internet.
 - ◆ People aged 65 years and over – 1 in 6 live in households with access to the Internet.

Area	Description	Internet Access (percent)
Main urban area	urban with 30,000 or more people	40
Secondary urban area	urban with 10,000–29,999 people	28
Minor urban area	urban with 1,000–9,999 people	25
Rural centre	rural areas with 300-999 people	26
Other rural	rural areas with fewer than 300 people	37
New Zealand		37

12. Overseas travel is increasing

- The number of short-term trips (12 months or less) by New Zealanders going overseas increased more than threefold between the years ended June 1985 and June 2002.
- The number of visits by overseas visitors to New Zealand also more than trebled in the same period.



Source: Statistics New Zealand

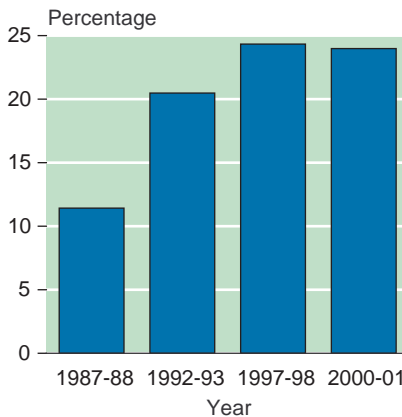
13. Employment patterns change

- The labour force grew 20 percent between December 1985 and December 2001 to reach nearly 2 million.
- Part-time employment grew by 62 percent. In 1985 part-time employees made up 16.6 percent of total employed. In 2001 that proportion had risen to 22.7 percent.
- Employment within industry has changed considerably. In 1985 numbers employed in manufacturing and numbers employed in community social and personal services were not dissimilar. The latter category of employment is now nearly double the former.
- The number of women in the labour force increased by almost one-third between 1984 and 2001. In comparison the number of men in the labour force increased by 5.4 percent.
- The Auckland region employs 35 percent of all workers.

14. Consumer prices more than doubled since 1984

- Consumer prices increased 113 percent between December 1984 and December 2001.
- In 1984, \$43 would buy approximately the same as \$100 today.
- In 1987/88, 11 percent of households spent more than 30 percent of their income on housing costs. In 2000/01 this proportion had more than doubled to 24 percent of households.

Households that Spend More than 30 Percent of Income on Housing Costs⁽¹⁾
1987–2001



1. Derived from the Household Economic Survey.

Source: Ministry of Social Development, Statistics New Zealand

15. International trade is changing

- Japan was our main export destination in 1988, accounting for 18 percent of merchandise trade revenue in that year. This dropped to 13 percent in 2001.
- Australia is now our number one export destination, accounting for 18 percent of the value of New Zealand's exports.
- The United States of America has also increased its share of New Zealand exports and is now the second largest export destination, accounting for 15 percent of our exports.
- The United Kingdom ranks fourth in terms of export destinations but has dropped from 7 percent in 1988 to 5 percent in 2001.
- The value of merchandise exports to all countries has increased by 141 percent between 1988 and 2001. Exports to many Asian countries have increased at a faster rate.

Value of merchandise exports

Country	Value of Exports 2001 (\$million)	Percentage Increase 1988 to 2001
Korea	1,433	358
Taiwan	705	227
Malaysia	689	241
Philippines	563	461
Indonesia	535	332
Thailand	405	483

www.stats.govt.nz



Auckland

Private Bag 92003

Phone: 09 357 2100

Fax: 09 379 0859

Wellington

PO Box 2922

Phone: 04 495 4600

Fax: 04 495 4610

Christchurch

Private Bag 4741

Phone: 03 374 8700

Fax: 03 374 8864

Internet

Website: www.stats.govt.nz

Email: info@stats.govt.nz